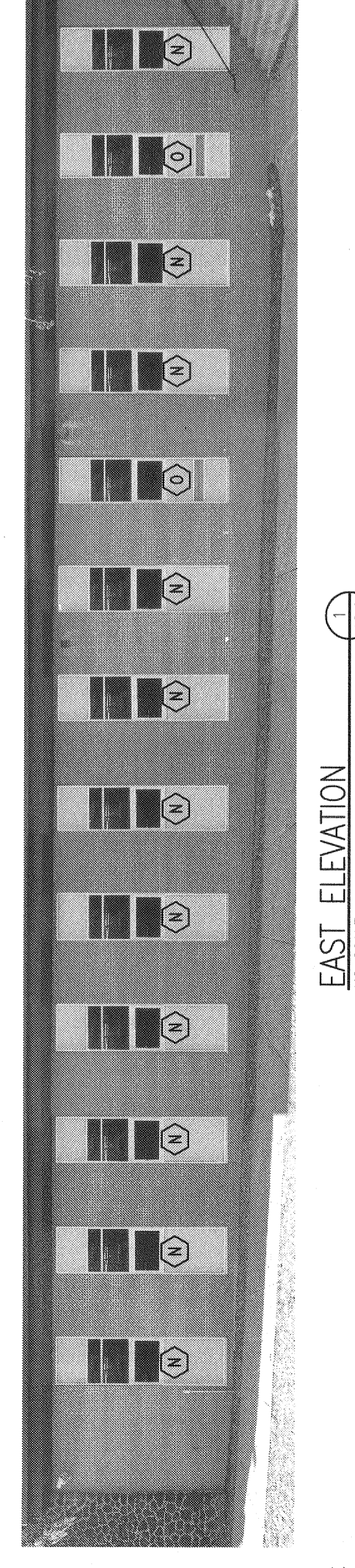
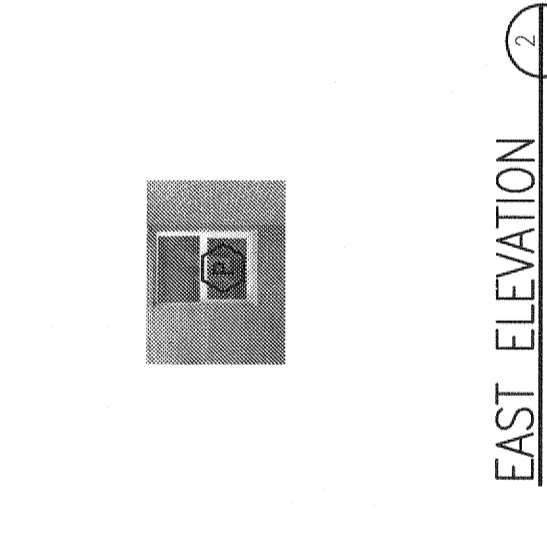
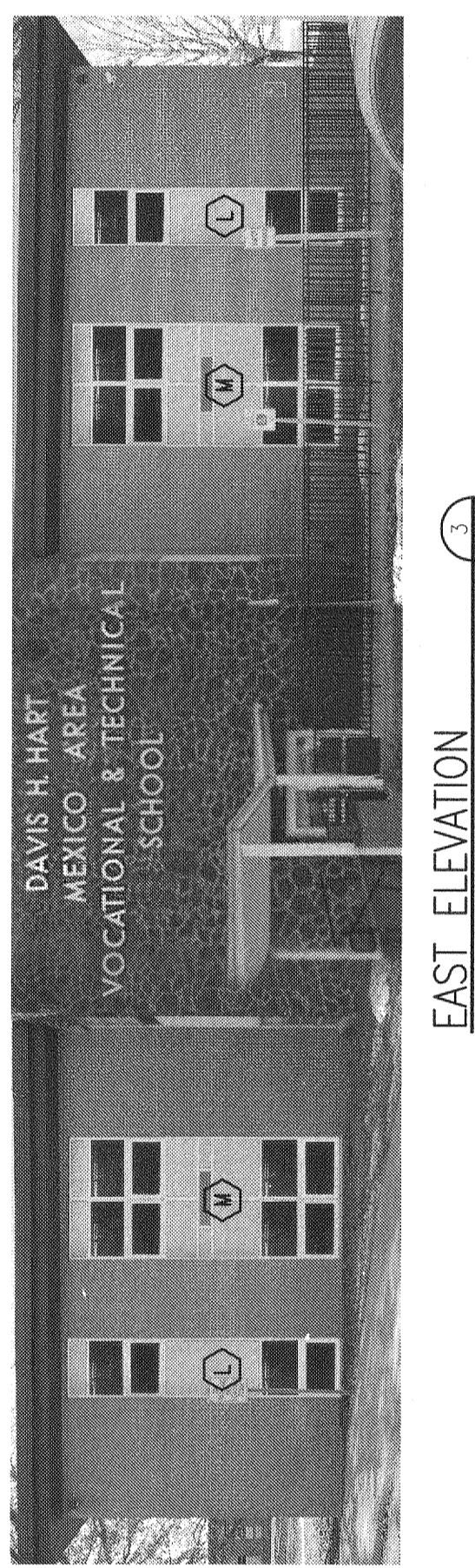


**BID PACKAGE - B**  
 MEXICO AREA VOCATIONAL & TECHNICAL SCHOOL WINDOW RENOVATIONS

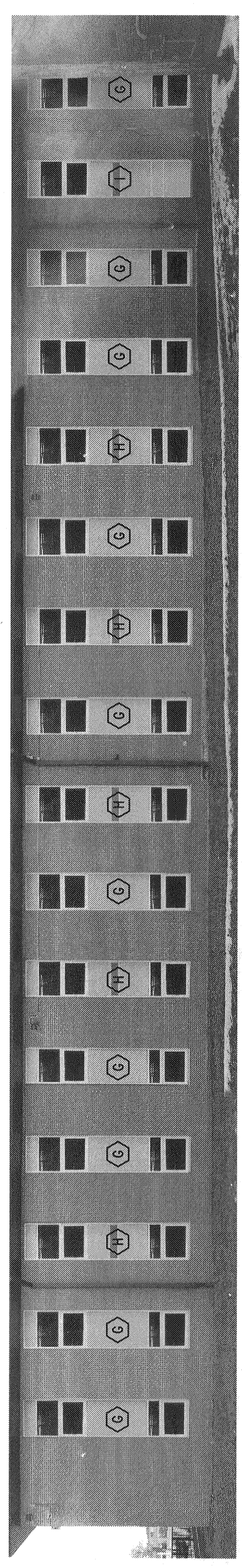
**GENERAL NOTES:**  
 CONTRACTOR WILL REMOVE ALL EXISTING PENETRATIONS THROUGH EXISTING WINDOWS AND REINSTALL THROUGH NEW PREFRAMES. THIS WORK SHALL INCLUDE ALL WORK TO REPAIR AND FINISH SURFACES AROUND ALL PENETRATIONS. EXCLUDE ANY PENETRATIONS THAT ARE NOT SHOWN. ALL ALUMINUM WINDOWS REMOVED BY CONTRACTOR SHALL BE RELOCATED TO BE REMOVED BY THE OWNER.



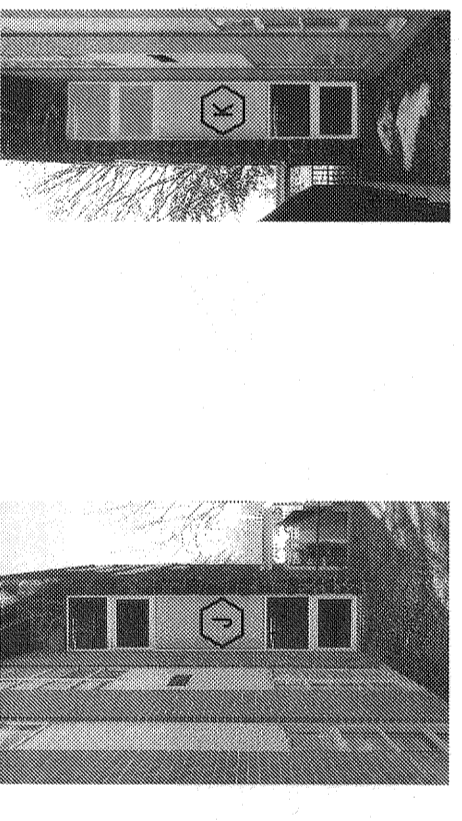
**EAST ELEVATION**  
NO SCALE

**EAST ELEVATION**  
NO SCALE

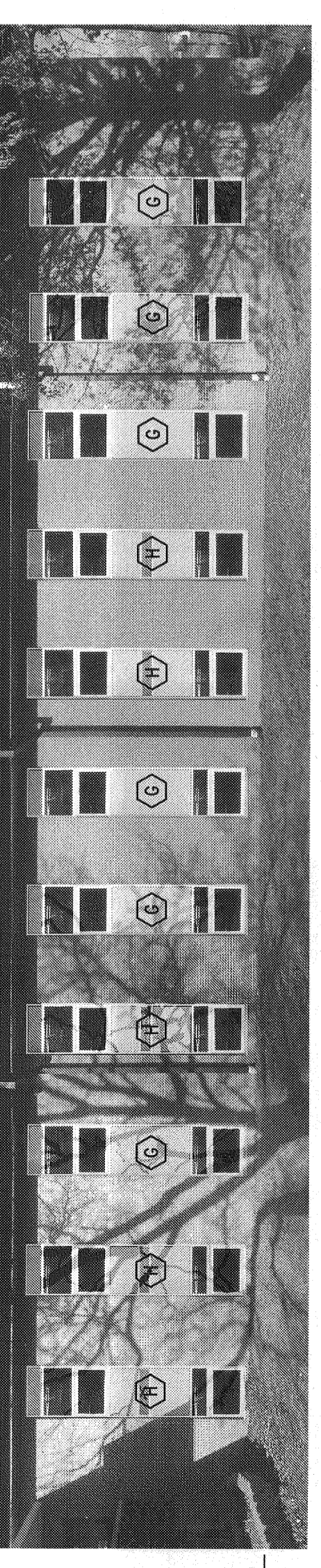
**EAST ELEVATION**  
NO SCALE



**NORTH ELEVATION**  
NO SCALE

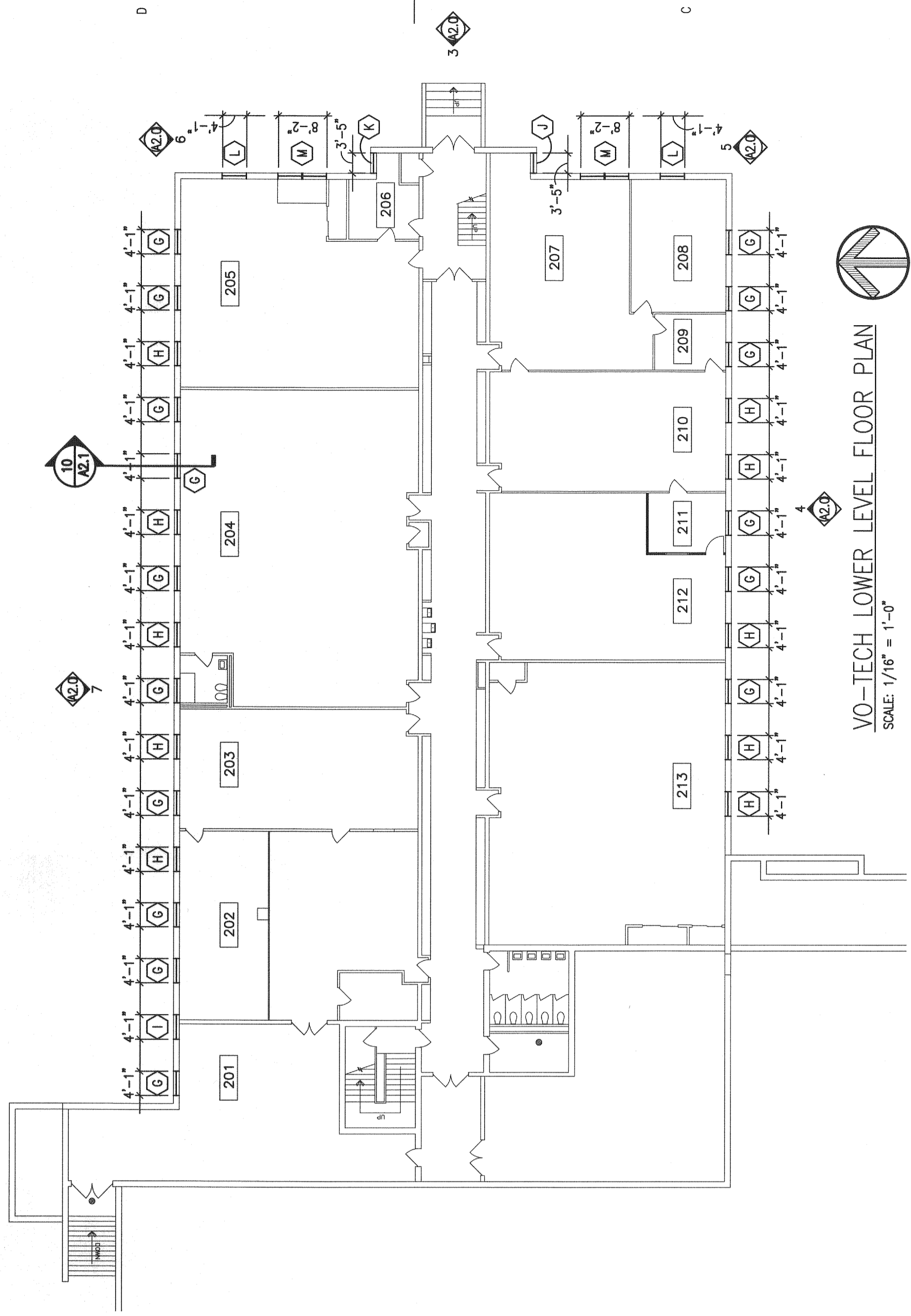


**SOUTH ELEVATION**  
NO SCALE

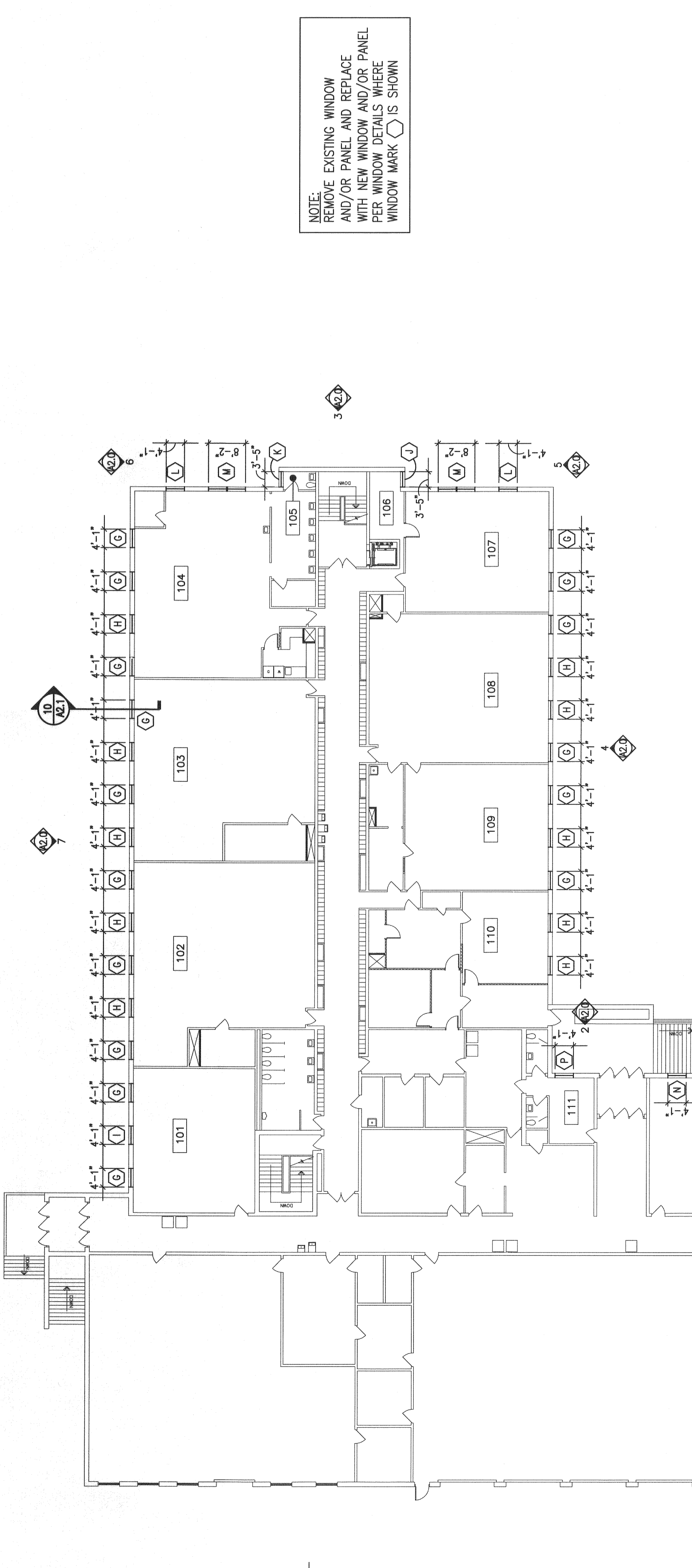


**EAST ELEVATION**  
NO SCALE

**SOUTH ELEVATION**  
NO SCALE



**VO-TECH LOWER LEVEL FLOOR PLAN**  
SCALE: 1/8" = 1'-0"



**VO-TECH MAIN LEVEL FLOOR PLAN**  
SCALE: 1/8" = 1'-0"

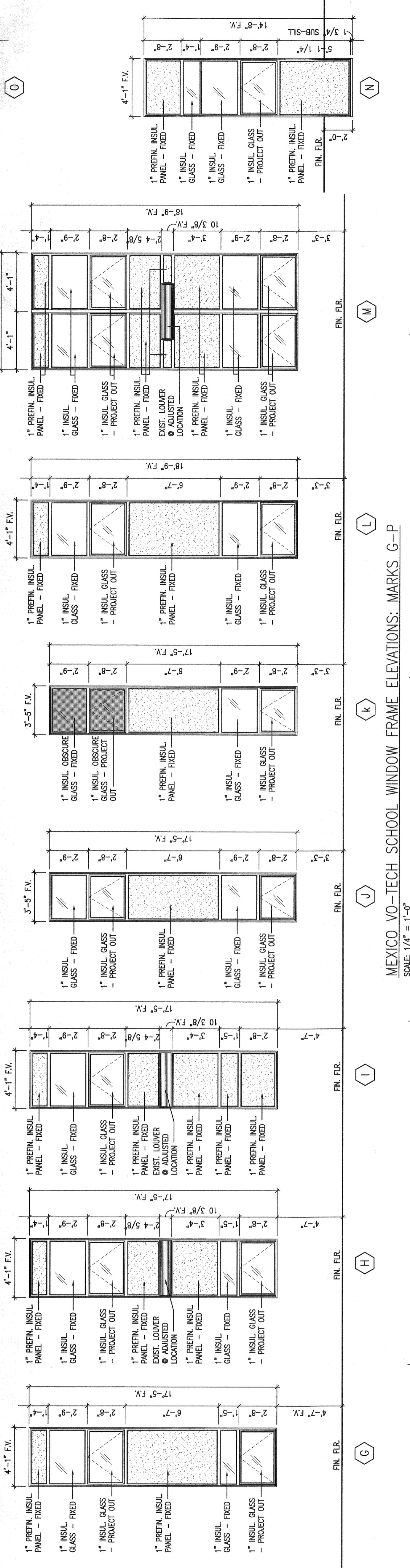
**NOTE:**  
 REMOVE EXISTING WINDOW AND/OR PANEL AND REPLACE WITH NEW WINDOW AND/OR PANEL PER WINDOW DETAILS WHERE WINDOW MARK ○ IS SHOWN

**MEXICO AREA VOCATIONAL & TECHNICAL SCHOOL WINDOW SCHEDULE**

MARK	DESCRIPTION	OPENING DIMENSION		HEIGHT	GLAZING		SECTION		REMARKS
		WIDTH	DEPTH		HEAD	JAMB	SILL		
G	HAWKO 2900 - 2 1/2" FRAME - ANNING (PROJECT OUT) / FRIED	4'-1" +/- (F.V.)	17'-5" +/- (F.V.)	10/0/21	1" INSULATED / 1" INSULATED PANEL	7/0/21; 8/0/21	10/0/21	---	---
H	HAWKO 2900 - 2 1/2" FRAME - ANNING (PROJECT OUT) / FRIED	4'-1" +/- (F.V.)	17'-5" +/- (F.V.)	10/0/21	1" INSULATED / 1" INSULATED PANEL	7/0/21; 8/0/21	10/0/21	---	RELOCATE AND FRAME AROUND EXIST. LOWER. SEE 9/0/21
I	HAWKO 2900 - 2 1/2" FRAME - ANNING (PROJECT OUT) / FRIED	4'-1" +/- (F.V.)	17'-5" +/- (F.V.)	10/0/21	1" INSULATED / 1" INSULATED PANEL	7/0/21; 8/0/21	10/0/21	---	RELOCATE AND FRAME AROUND EXIST. LOWER. SEE 9/0/21
J	HAWKO 2900 - 2 1/2" FRAME - ANNING (PROJECT OUT) / FRIED	3'-5" +/- (F.V.)	17'-5" +/- (F.V.)	10/0/21	1" INSULATED / 1" INSULATED PANEL	2/0/21; 3/0/21	4/0/21; 5/0/21	---	---
K	HAWKO 2900 - 2 1/2" FRAME - ANNING (PROJECT OUT) / FRIED	3'-5" +/- (F.V.)	17'-5" +/- (F.V.)	10/0/21	1" INSULATED / 1" INSULATED PANEL	2/0/21; 3/0/21	4/0/21; 5/0/21	---	---
L	HAWKO 2900 - 2 1/2" FRAME - ANNING (PROJECT OUT) / FRIED	4'-1" +/- (F.V.)	18'-9" +/- (F.V.)	10/0/21	1" INSULATED / 1" INSULATED PANEL	7/0/21; 8/0/21	10/0/21; 11/0/21	---	---
M	HAWKO 2900 - 2 1/2" FRAME - ANNING (PROJECT OUT) / FRIED	4'-1" +/- (F.V.)	18'-9" +/- (F.V.)	10/0/21	1" INSULATED / 1" INSULATED PANEL	7/0/21; 8/0/21	10/0/21; 11/0/21	---	---
N	HAWKO 2900 - 2 1/2" FRAME - ANNING (PROJECT OUT) / FRIED	8'-2" +/- (F.V.)	14'-8" +/- (F.V.)	10/0/21	1" INSULATED / 1" INSULATED PANEL	1/0/21; 2/0/21	4/0/21; 5/0/21	---	RELOCATE AND FRAME AROUND EXIST. LOWER. SEE 9/0/21
O	HAWKO 2900 - 2 1/2" FRAME - ANNING (PROJECT OUT) / FRIED	4'-1" +/- (F.V.)	14'-8" +/- (F.V.)	10/0/21	1" INSULATED / 1" INSULATED PANEL	7/0/21; 8/0/21	10/0/21	---	RELOCATE AND FRAME AROUND EXIST. LOWER. SEE 11/0/21
P	HAWKO 2900 - 2 1/2" FRAME - ANNING (PROJECT OUT) / FRIED	4'-1" +/- (F.V.)	5'-5" +/- (F.V.)	3/0/21	1" INSULATED	7/0/21; 8/0/21	10/0/21	---	---

**WINDOW RENOVATIONS TO MEXICO AREA VOCATIONAL & TECHNICAL SCHOOL, McWILLAN AND EUGENE FIELD FOR HAWTHORNE ELEMENTARY SCHOOL**  
 FOR MEXICO 59 SCHOOL DISTRICT  
 AUDRAIN COUNTY, MEXICO, MISSOURI

Comm. No. 1402-B  
 Date: 01-04-2014  
 File: A2.0\_A21 VO-TECH.DWG  
 Label Saved By: OWNER  
 Laid Out By: SAAM  
 Comment: SAAM  
**VO-TECH PLANS, ELEVATIONS & SCHEDULE**  
**A2.0**



MEXICO VO-TECH SCHOOL WINDOW FRAME ELEVATIONS: MARKS G-P  
 SCALE: 1/4" = 1'-0"