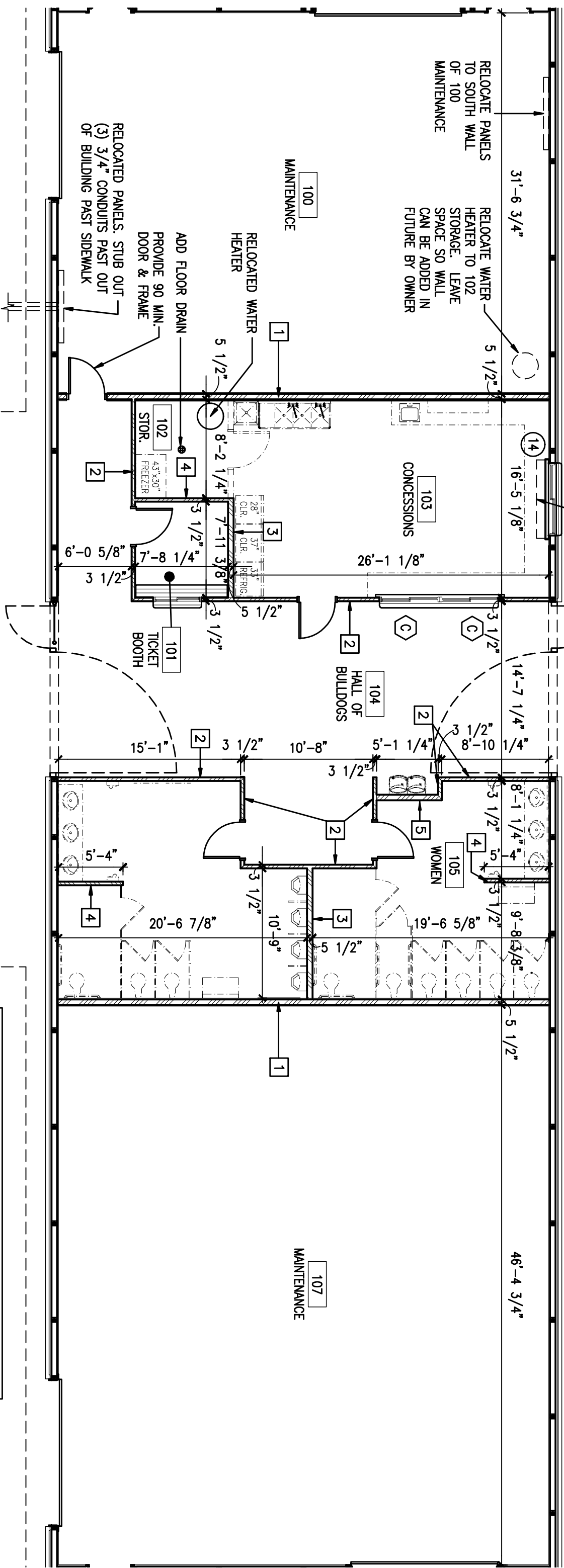


RELOCATED & RESIZED (6'-0" OPENING) ROLLING COUNTER DOOR INTERIOR SIDE

NOTES:
 1. ROLLING COUNTER DOOR (DOOR MARK 14 W/ REVISED SPECIFICATION) TO MOVE TO EXTERIOR SIDE OF WINDOW MARK A, PROVIDE (2) 5'-0" SLIDING WINDOWS IN 103 CONCESSIONS, SERIES 3400.



WALL TYPES

- 1 2 HOUR FIRE SEPARATION - (1) LAYER 5/8" FIRE SHIELD HI-ABUSE XP GYP. BOARD (EXTERIOR FACE) OVER (1) LAYER 5/8" TYPE 'X' GYP. BOARD (NEXT TO STUD) EACH SIDE OF 5 1/2" WOOD STUDS @ 16" O.C. FILL CAVITY WITH BATT INSULATION (BY OWNER - COORDINATE). WALLS SHALL EXTEND FROM FINISH FLOOR TO ROOF DECK.
- 2 (1) LAYER 5/8" MOISTURE RESISTANT, HI-IMPACT XP GYP. BOARD (EXTERIOR FACE ON 104 SIDE) OVER 3 1/2" WOOD STUDS.
- 3 5 1/2" WOOD STUDS.

WALL TYPES

- 4 3 1/2" WOOD STUDS.
 - 5 (1) LAYER 5/8" MOISTURE RESISTANT, HI-IMPACT XP GYP. BOARD (EXTERIOR FACE ON 104 SIDE) OVER 5 1/2" WOOD STUDS.
- NOTE: ALL GYP. BOARD PRODUCTS DENOTED ARE SPECIFIED AROUND NATIONAL GYPSUM CO. APPROVED SUBSTITUTIONS ACCEPTED.

FLOOR PLAN
 SCALE: 1/8" = 1'-0"



REVISED MAY 2, 2011